

What steps are taken in the I & RS process?

1. An educator makes a referral.
2. An I & RS meeting is held with all of the team members.
3. An action plan is developed for the student.
4. The student, his or her parents and teachers are notified of the action plan.
5. Follow up meetings are conducted to see if the action plan is working or needs to be revised.

Additional Resources

Division of Child Protection & Permanency (formerly DYFS)

1- 877- NJ- ABUSE

<http://www.state.nj.us/dcf/divisions/dyfs>

Kennedy Behavioral Health Services 1-800-528-3425

Crisis Mobile Response/PerformCare 1-877-652-7624 Press 2

Parent to Parent (Drug/ Alcohol Counseling) (856) 983- 3328

Center for Family Services (856) 428- 5688

Camden County Board of Social Services (856) 225- 7797



580 Erial Rd.
Blackwood, NJ 08012
(856) 227-4106

BOARD OF EDUCATION

Mrs. Patricia Wilson, President
Mr. Jay McMullin, Vice President

| | |
|---------------------|----------------------|
| Mr. Kevin Bucceroni | Dr. Joyce Ellis |
| Mrs. Dawn Leary | Mr. Bill Murray |
| Dr. Mark Schmitz | Mrs. Jennifer Storer |
| Mr. Benjamin Zanghi | |

DISTRICT ADMINISTRATION

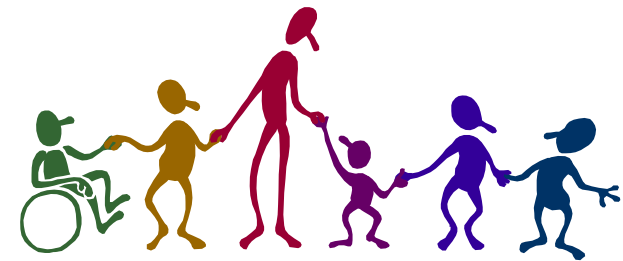
Dr. Brian Repici, Superintendent of Schools

Matt Szuchy, Director of Curriculum & Instruction
David C. Cappuccio, Jr., Director of Special Services
& Policy

Julie Scully, Supervisor of Personnel Management
Jean Grubb, Business Administrator &
Board Secretary

For more information or a complete listing of referral sources, please contact your child's school counselor, or go to www.bhprsd.org, and access your child's school. Click on your school's Counseling tab, and then Resources for Outside Counseling

Black Horse Pike Regional School District



Intervention and Referral Services (I & RS)

I & RS Mission Statement

In accordance with federal law, as well as the New Jersey Administrative Code, the Black Horse Pike Regional School District is committed to providing equal access to free public education for **ALL** students regardless of learning, behavioral, and/or health difficulties. To address cases in which students are experiencing these difficulties, the Black Horse Pike Regional School District has established, and will continue to implement the delivery of intervention and referral services as part of a coordinated effort to assist at-risk students within our district.

It is the mission of the **Intervention and Referral Services (I&RS) Committee** to ensure that students' needs are addressed no matter the deficit. The I&RS Committee serves as a pre-referral system designed to provide resources to teacher/staff, parents, administration, and students in order to assist students at-risk for learning, behavioral, and/or health difficulties. The committee may accomplish this via school resources, as well as community outreach with the intention to provide all student the necessary resources to assist them with achieving their fullest potential.

What is Intervention and Referral Services (I & RS)

All faculty, staff and administrators wish to see their students achieve what they are fully capable of. Unfortunately for some of our students, achieving their full potential is a difficult task because of underlying emotional, behavioral, learning or medical difficulties.

The I & RS team is a team of caring faculty, staff, and administrators who recognize these difficulties and develop individualized intervention plans for students with these issues. Intervention plans are shared with the student's teachers and follow up meetings are conducted. Based on information received, the I & RS team can also make referrals to the Core Team, Child Study Team and for 504 plans.

The team meets once a month for the entire day (depending on the amount of referrals received). Each referral will run approximately 45 minutes long. A student advocate is also assigned to each case who monitors the students progress and keeps all teachers, parents and administrators informed of the progress of the student.

How are students referred to the I & RS Team?

An educator will refer a student to the I & RS team if he or she is concerned about a Behavioral, Attendance, Academic or Health issue and has tried other interventions to no avail.

Functions of the Intervention and Referral Services (I & RS) Team (N.J.A.C. 6A:16- 7.2)

The functions of the system of intervention and referral services in each school building shall be to

1. Identify learning, behavior and health difficulties of students;
2. Collect thorough information on the identified learning, behavior, and health difficulties;
3. Develop and implement action plans which provide for appropriate school or community interventions or referrals to school and community resources, based on the collected data and desired outcomes for the identified learning, behavior and health difficulty;
4. Provide support, guidance and professional development to school staff who identify learning, behavior and health difficulties;
5. Provide support, guidance and professional development to school staff who participate in each building's system for planning and providing intervention and referral services;
6. Actively involve parents or guardians in the development and implementation of intervention and referral services action plans;
7. Coordinate the access to and delivery of school resources and services for achieving the outcomes identified in the intervention and referral services action plans;
8. Coordinate the services of community based social and health provider agencies and other community resources for achieving the outcomes identified in the intervention and referral services action plans;

9. Maintain records of all requests for assistance and all intervention and referral services action plans according to the requirements of 34 CFR Part 98, 34 CFR Part 99, 42 CFR Part II, N.J.S.A. 18A:40A- 7.1, N.J.A.C. 6A:16- 3.2, and N.J.A.C.6:3- 2.1;

10. Review and assess the effectiveness of the provisions of each intervention and referral services action plan in achieving the outcomes identified in each action plan and modify each action plan to achieve the outcomes, as appropriate; and

At a minimum, annually review the intervention and referral services action plans and the actions taken as a result of the building's system of intervention and referral services and make recommendations to the principal for improving school programs and services as, appropriate.

What are some specific observable behaviors

- Increased discipline issues
- Failing grades
- Changes in behavior
- Falling asleep in class
- Not completing assignments
- Chronic absenteeism
- Decreased participation
- Bullying behaviors
- Defiance of authority
- Alcohol, tobacco and other drug use
- Deteriorating personal hygiene
- Anything out of the ordinary for that student

