

School Performance Reports

Two year comparison

Triton

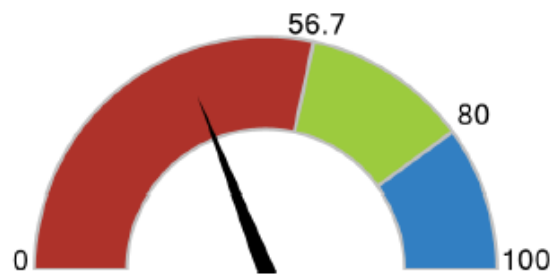
How did students perform on assessments?



Students that met or exceeded expectations on statewide assessments

English Language Arts

38%



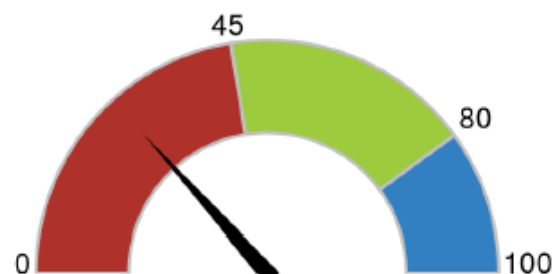
Below State: 0 - 56.6% ✓

Met State: 56.7 - 79.9%

Met Goal: 80 - 100%

Math

26.6%



Below State: 0 - 44.9% ✓

Met State: 45 - 79.9%

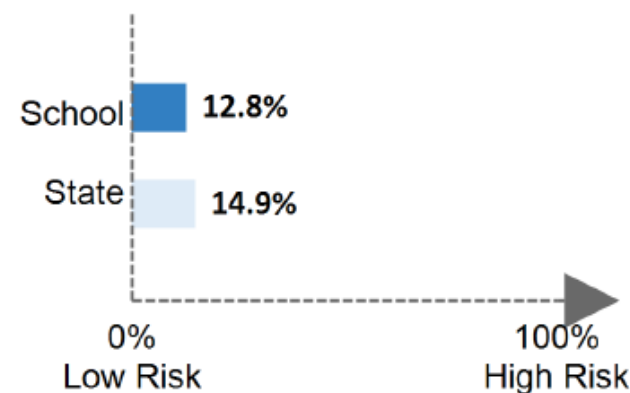
Met Goal: 80 - 100%

Are students at risk?



Students that were absent for 10% or more of days enrolled

Chronic Absenteeism



Are students graduating?



4-year Graduation Rate

92%



Below State: 0 - 90.8%

Met State: 90.9 - 94.9% ✓

Met Goal: 95 - 100%

Are students college and career ready?



AP/IB Courses:

28.0% of 11th and 12th graders enrolled (State = 34.9%)

Dual Enrollment Courses:

48.8% of 11th and 12th graders enrolled (State = 13.3%)

Industry-Valued Credentials:

0.0% of students earned (State = 0.9%)

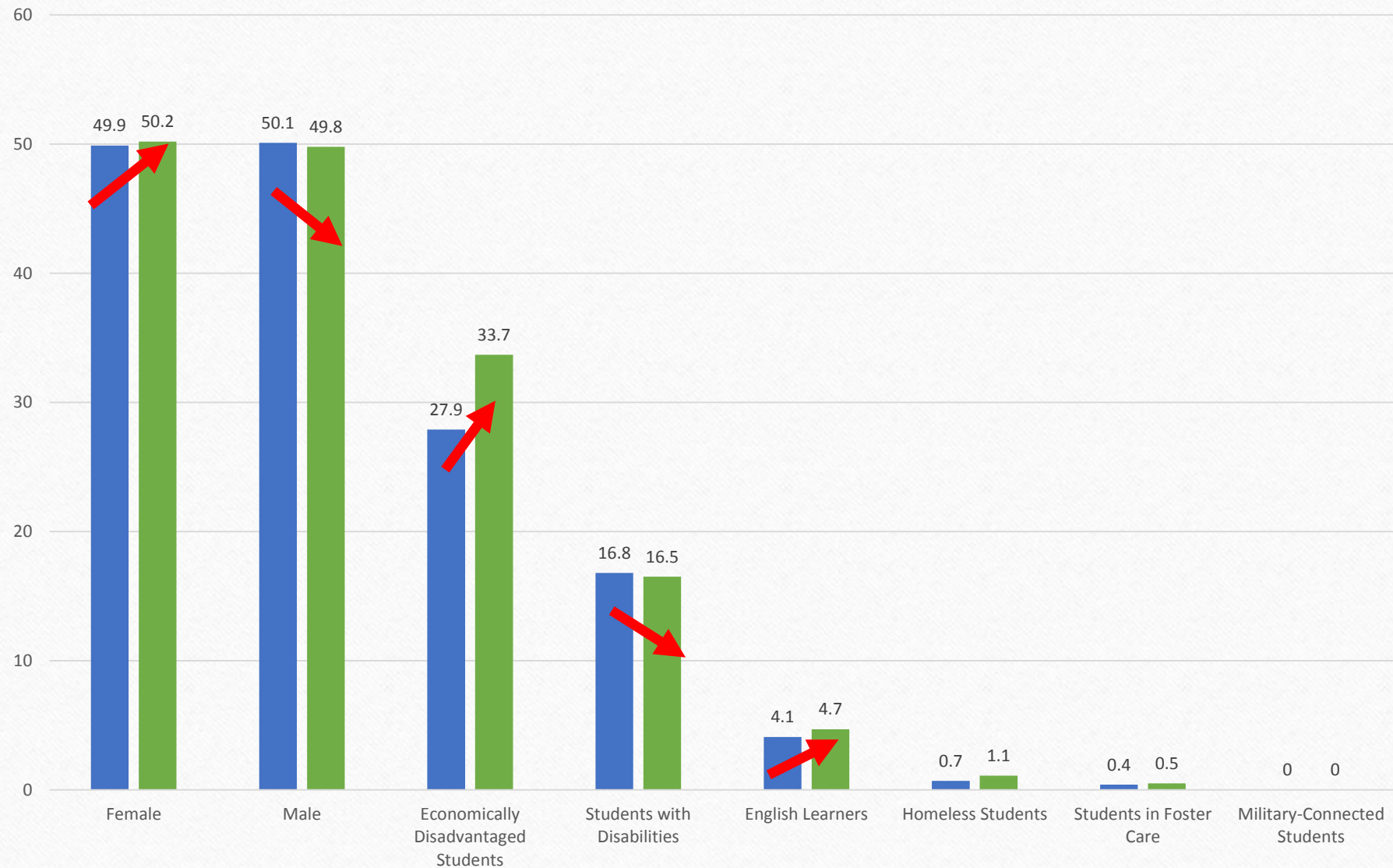
College Enrollment:

62.7% of graduates enrolled (State = 77.9%)

High School Enrollment

	Highland			Triton			Timber Creek			OOD		
Grade	2017-18	2018-19	2019-20	2017-18	2018-19	2019-20	2017-18	2018-19	2019-20	2017-18	2018-19	2019-20
09	315	279	328	262	316	326	302	311	281	33	26	3
10	302	315	279	310	266	316	286	297	311	22	37	26
11	313	292	315	273	287	266	279	276	297	17	16	37
12	268	305	292	258	271	287	289	303	276	54	47	46
Total	1198	1191	1214	1103	1140	1195	1156	1187	1165	126	126	112

Enrollment Trends by subgroups

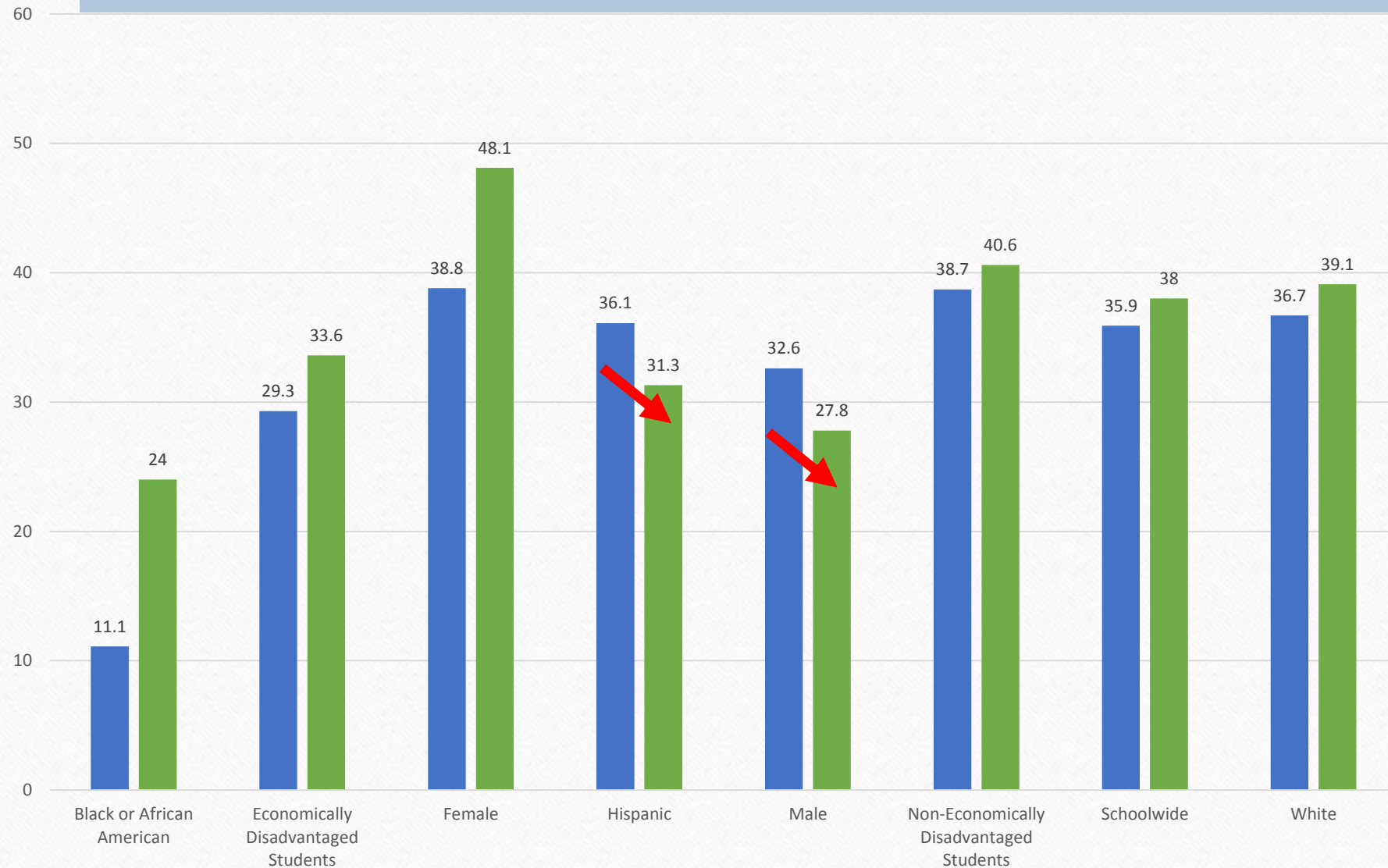


■ 2016-2017 TRITON REGIONAL HIGH SCHOOL

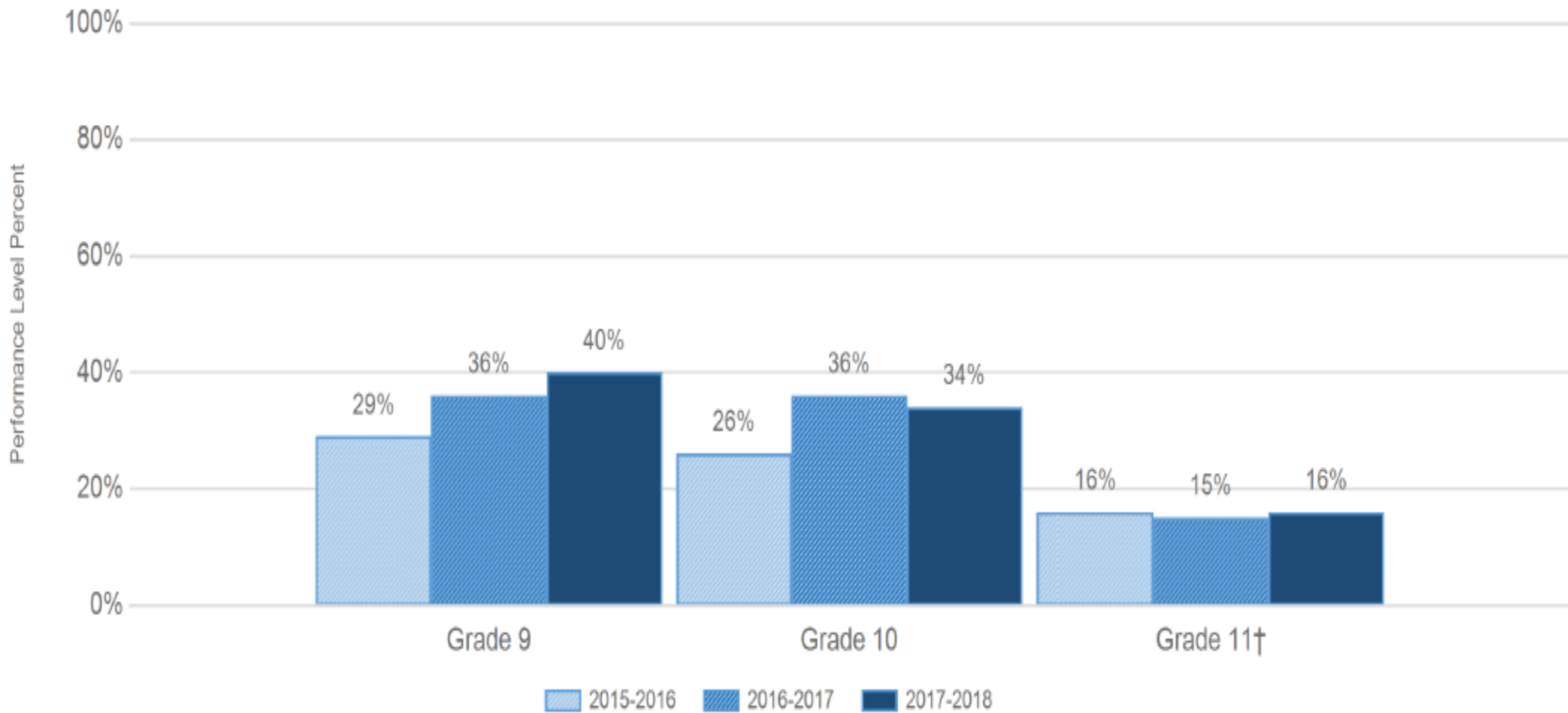
■ 2017-2018 TRITON REGIONAL HIGH SCHOOL

Percent of Test Takers who Met or Exceeded Expectations **ELA**

BLUE = 2016-17 and RED = 2017-18

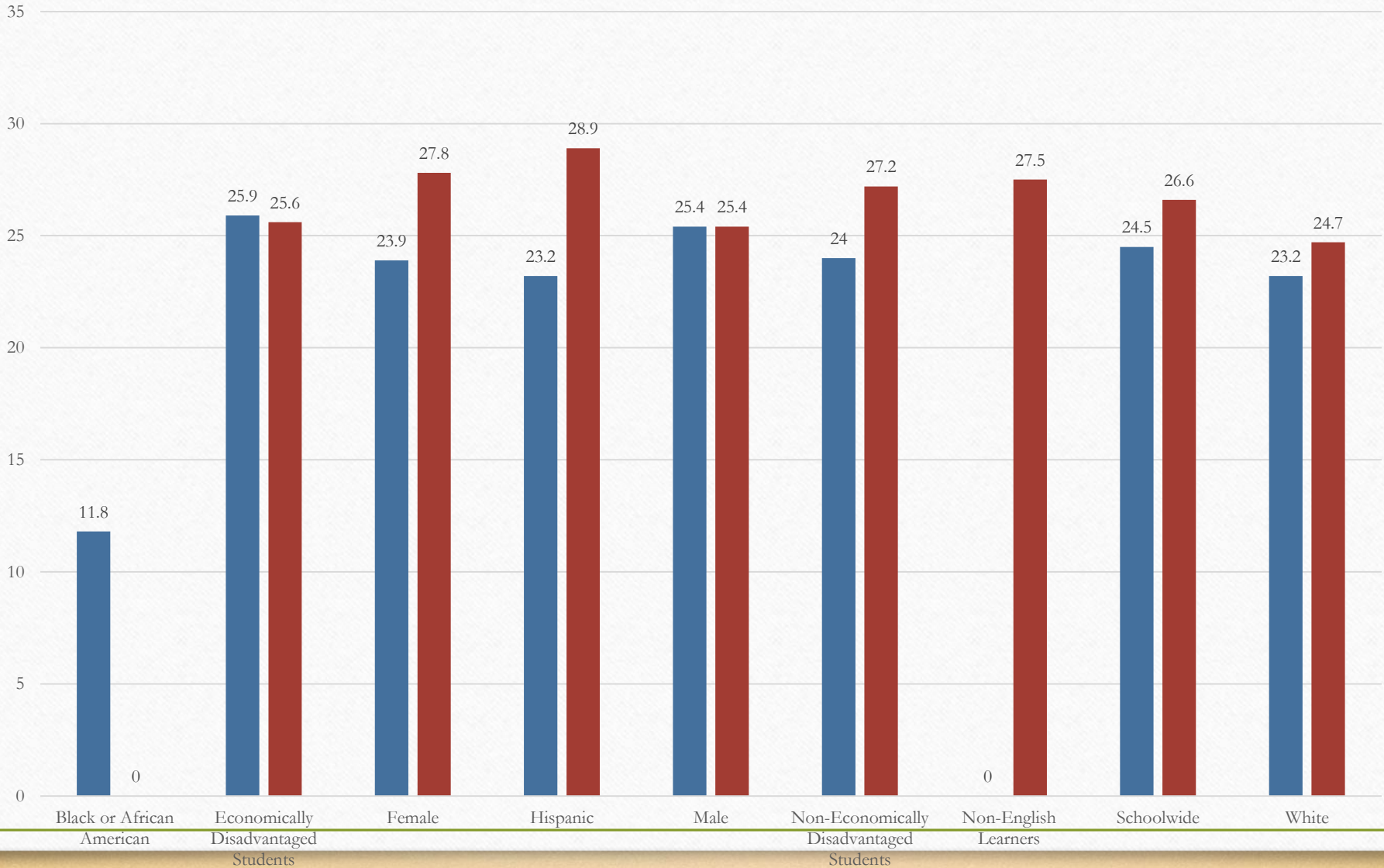


Percent of Test Takers who Met or Exceeded Expectations **ELA** Three year TREND

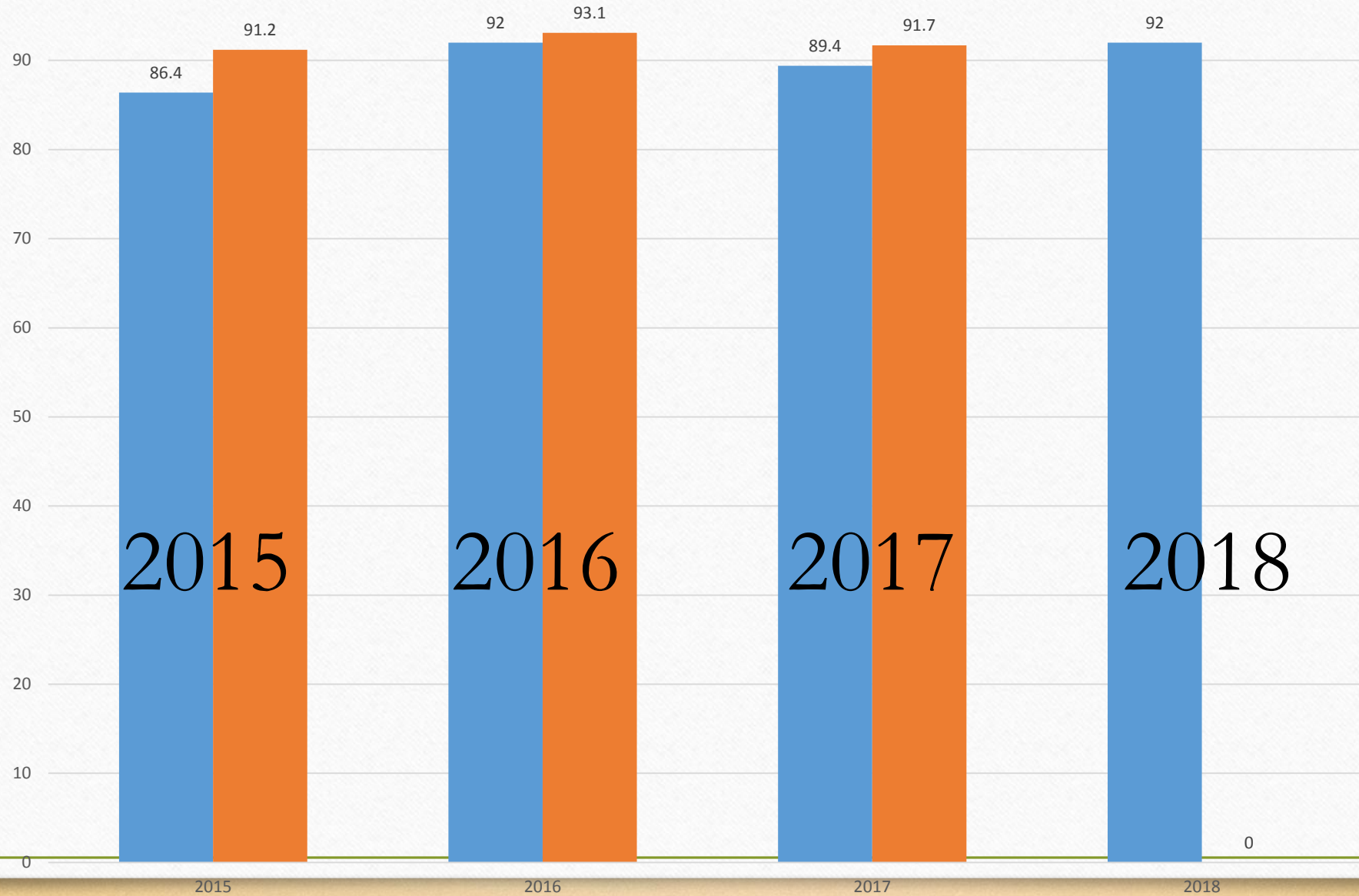


Percent of Test Takers who Met or Exceeded Expectations **MATH**

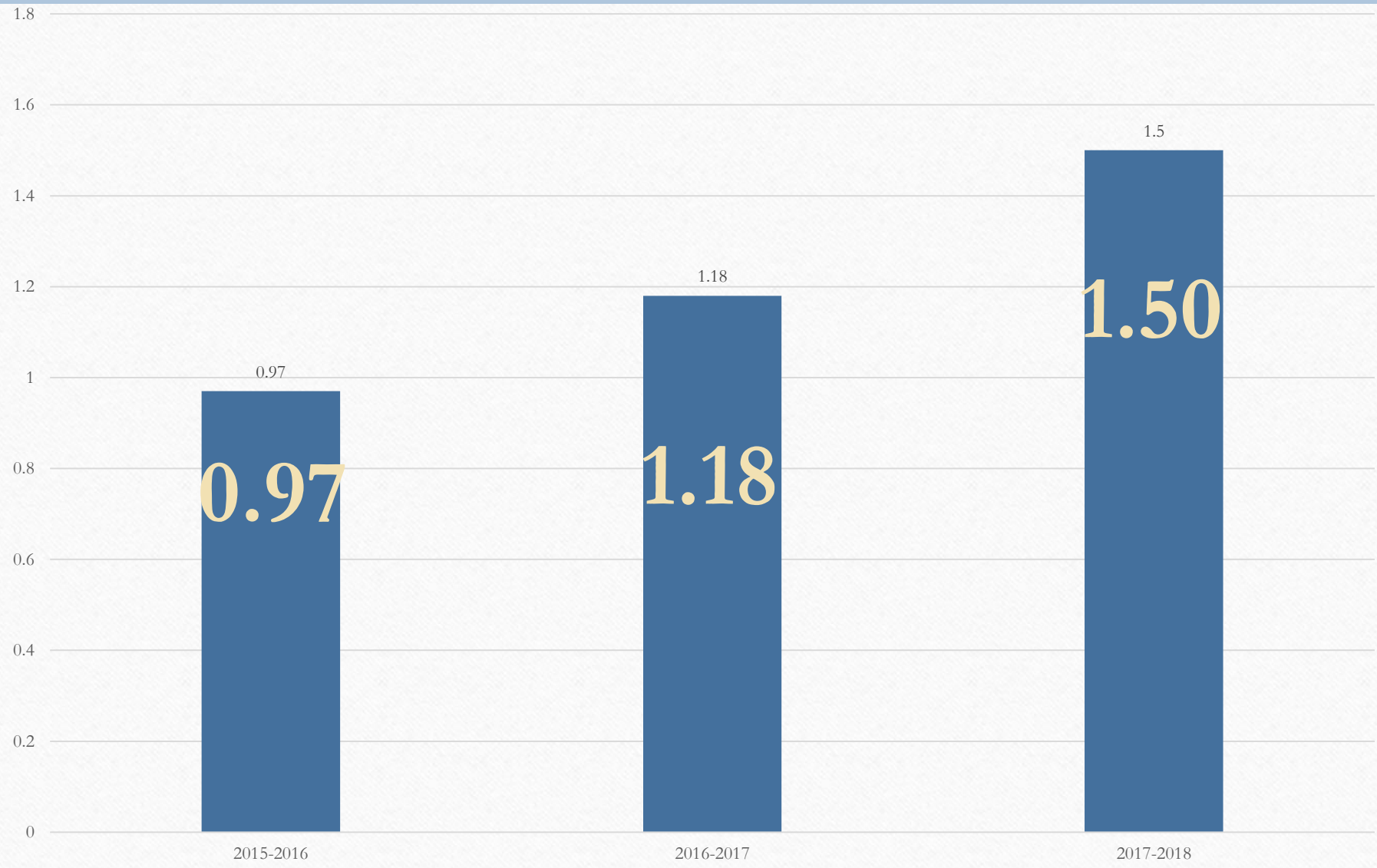
BLUE = 2016-17 and RED = 2017-18



FOUR (BLUE) AND FIVE (ORANGE) YEAR GRADUATION RATES

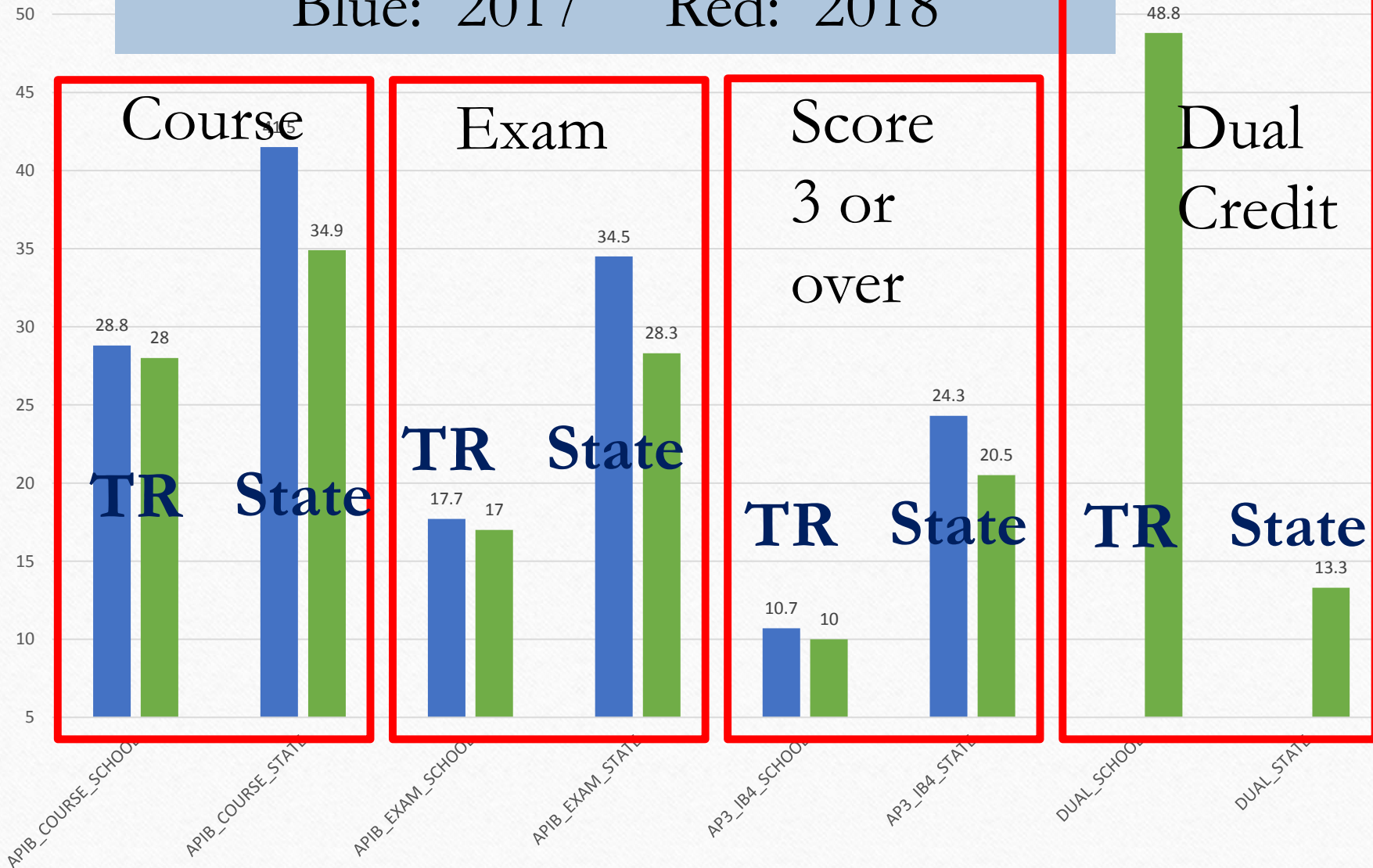


DROPOUT RATE TRENDS 2015 TO 2018



Advanced Placement Percentages

Blue: 2017 Red: 2018



■ 2016-2017 TRITON REGIONAL HIGH SCHOOL

■ 2017-2018 TRITON REGIONAL HIGH SCHOOL

High School Course	Department	CCC Course #	CCC Course Title
AP Lang & Comp	English	ENG 101	English Composition
AP Statistics	Math	MTH 111	Elements of Statistics I
Probability & Statistics	Math	MTH 111	Elements of Statistics I
AP Calculus AB/BC	Math	MTH 140	Calculus I
Calculus (TR)	Math	MTH 122	Applied Calculus
Calculus	Math	MTH 140	Calculus I
Anatomy & Physiology	Science	BIO 103	Human Biology
AP Biology	Science	BIO 111	Biology I-Science
AP Chemistry	Science	CHM 111	Chemistry I- Science
AP Environmental Science	Science	BIO 106	Living in the Environment
AP Physics 1	Science	PHY 101	Physics I
Forensic Science	Science	CHM 145	Intro to Forensic Science
AP Government & Politics	Social Studies	POL 103	American Government
AP Psychology	Social Studies	PSY 101	Basic Psychology
AP U.S. History II	Social Studies	HIS 122	US History II
CAD I & Architectural Des.	Technology	CAD 101	Computer Aided Engineering Graphics
French III Honors	World Lang	FRE 101	Elementary French I
French IV Honors	World Lang	FRE 102	Elementary French II
Italian III Honors	World Lang	ITA 101	Elementary Italian I
Italian IV Honors	World Lang	ITA 102	Elementary Italian II
Spanish III Honors	World Lang	SPA 101	Elementary Spanish I
Spanish IV Honors	World Lang	SPA 102	Elementary Spanish II

English

Math (5)

Science (6)

Social Studies (3)

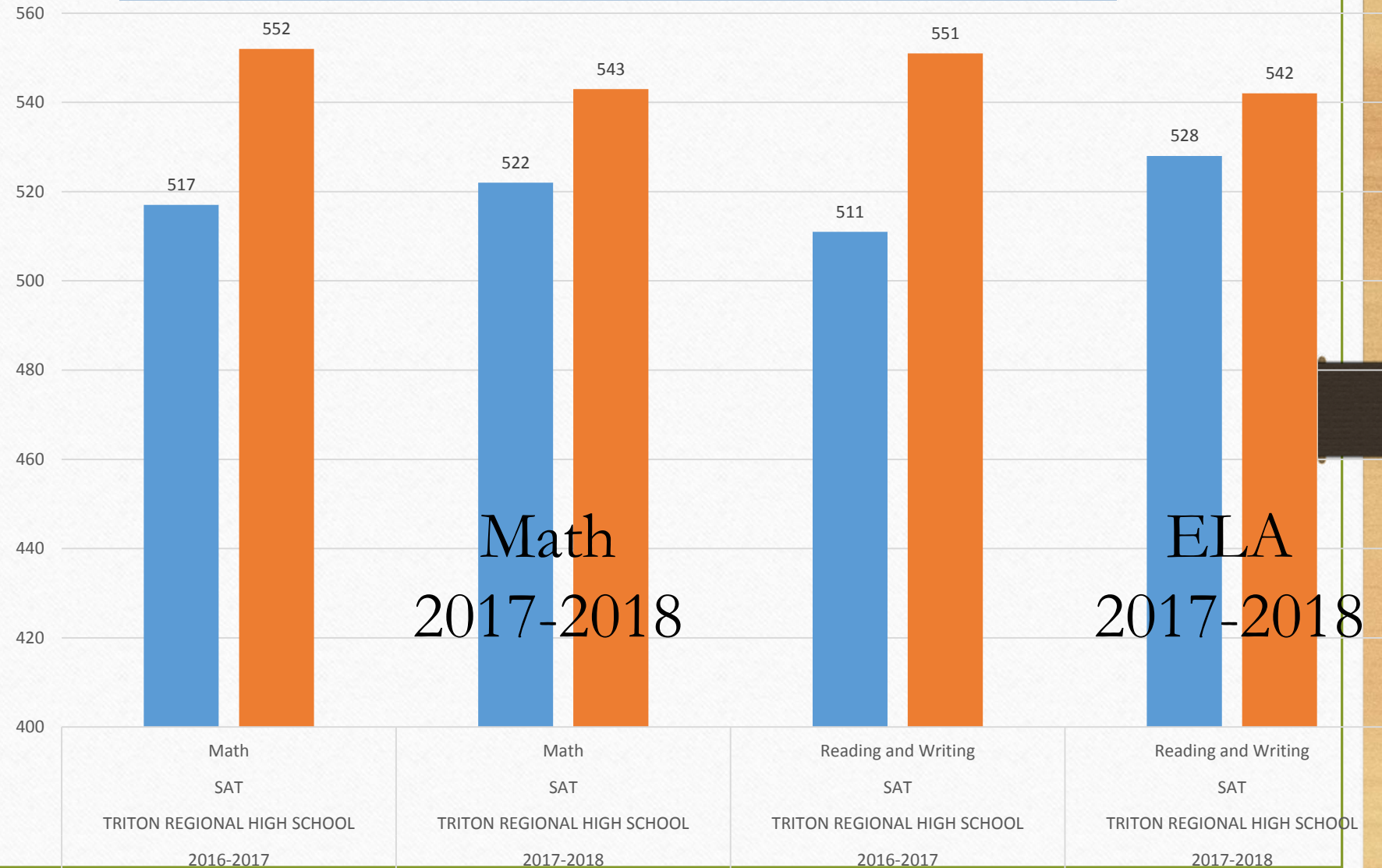
Technology

World Language (6)

SAT Scores

Blue: School Red: State

ORANGE



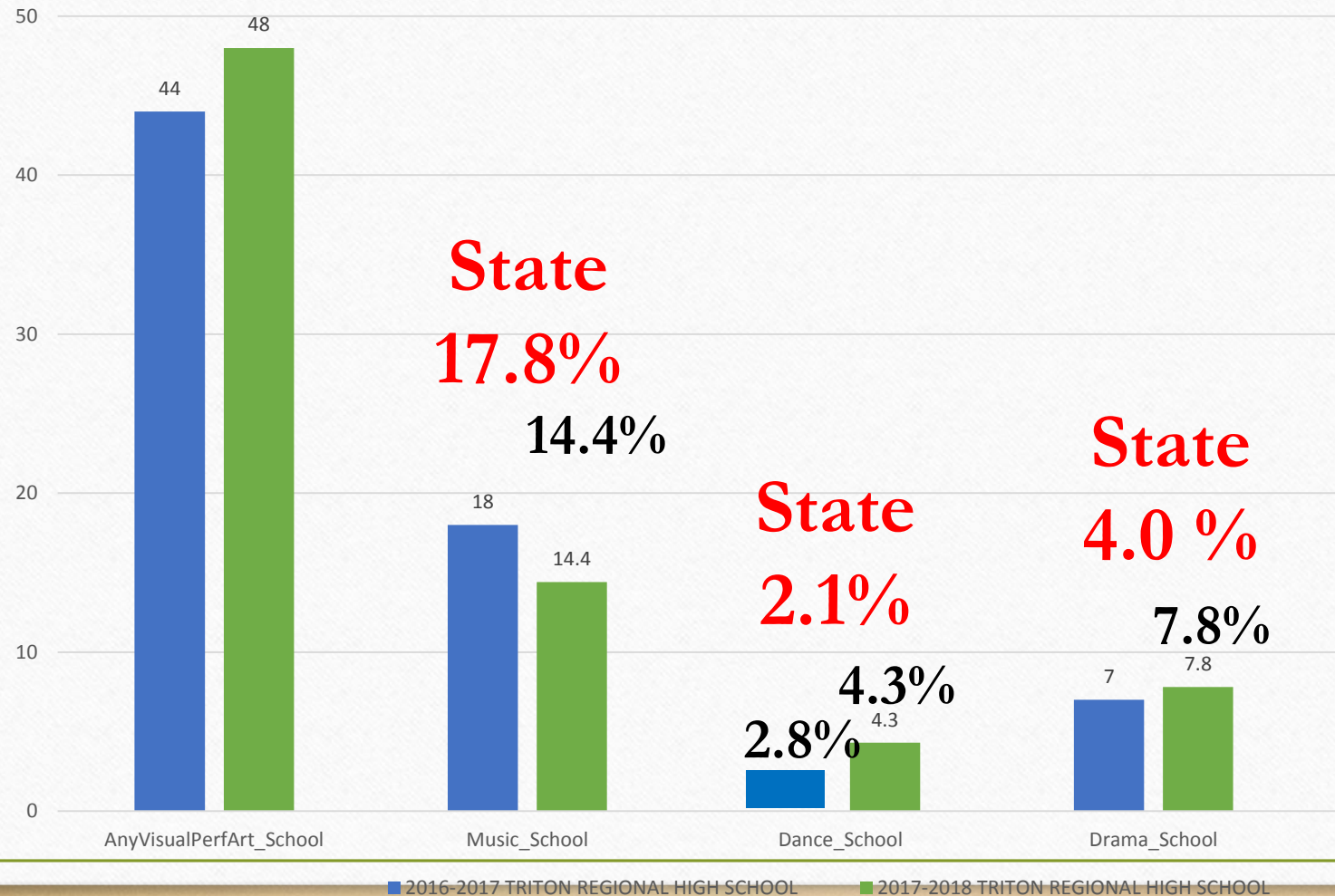
Math
2017-2018

ELA
2017-2018

■ School_Avg ■ State_avg

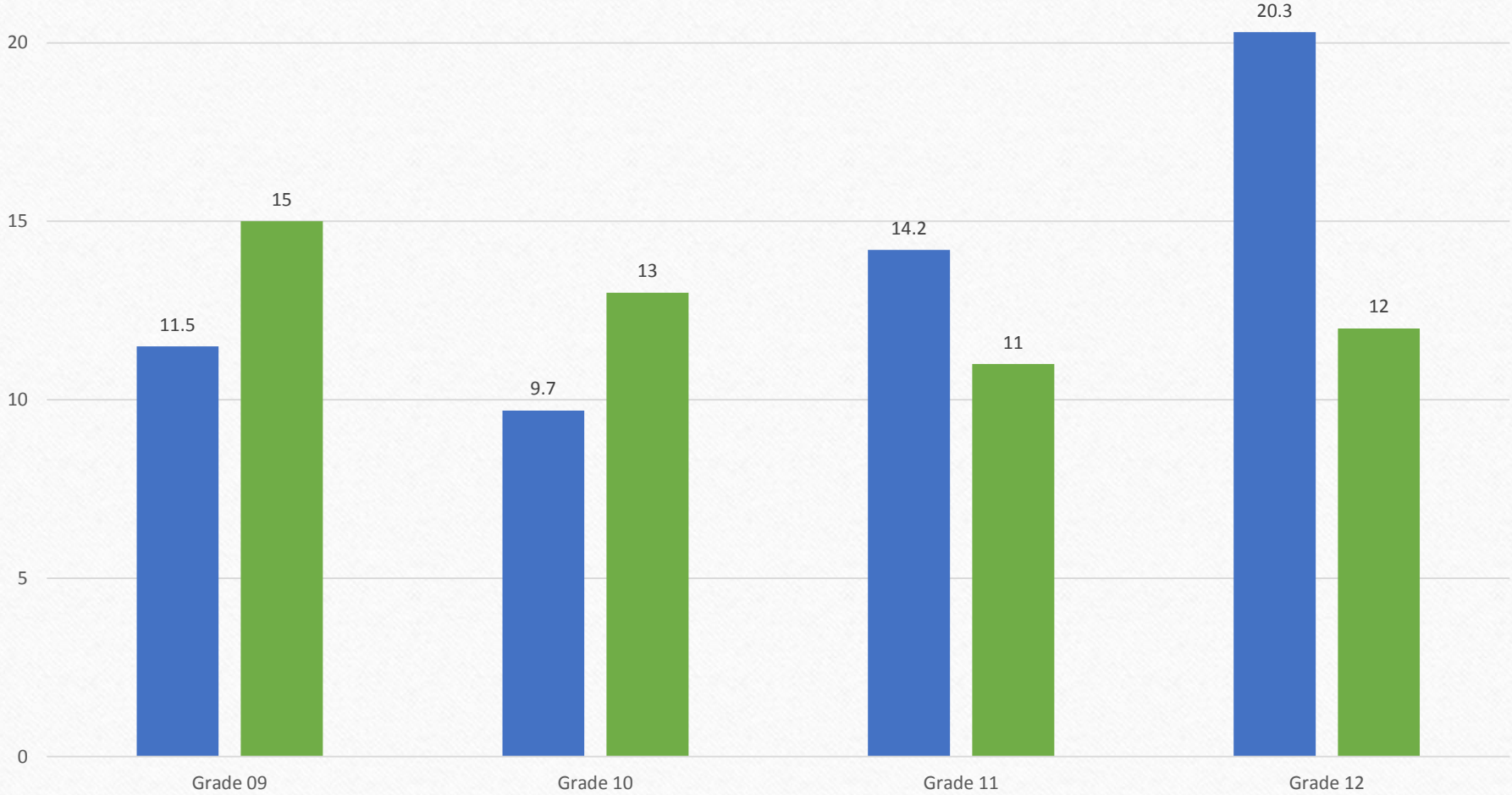
Visual and Performing Arts Enrollment Percentages

Blue 2017 Red 2018

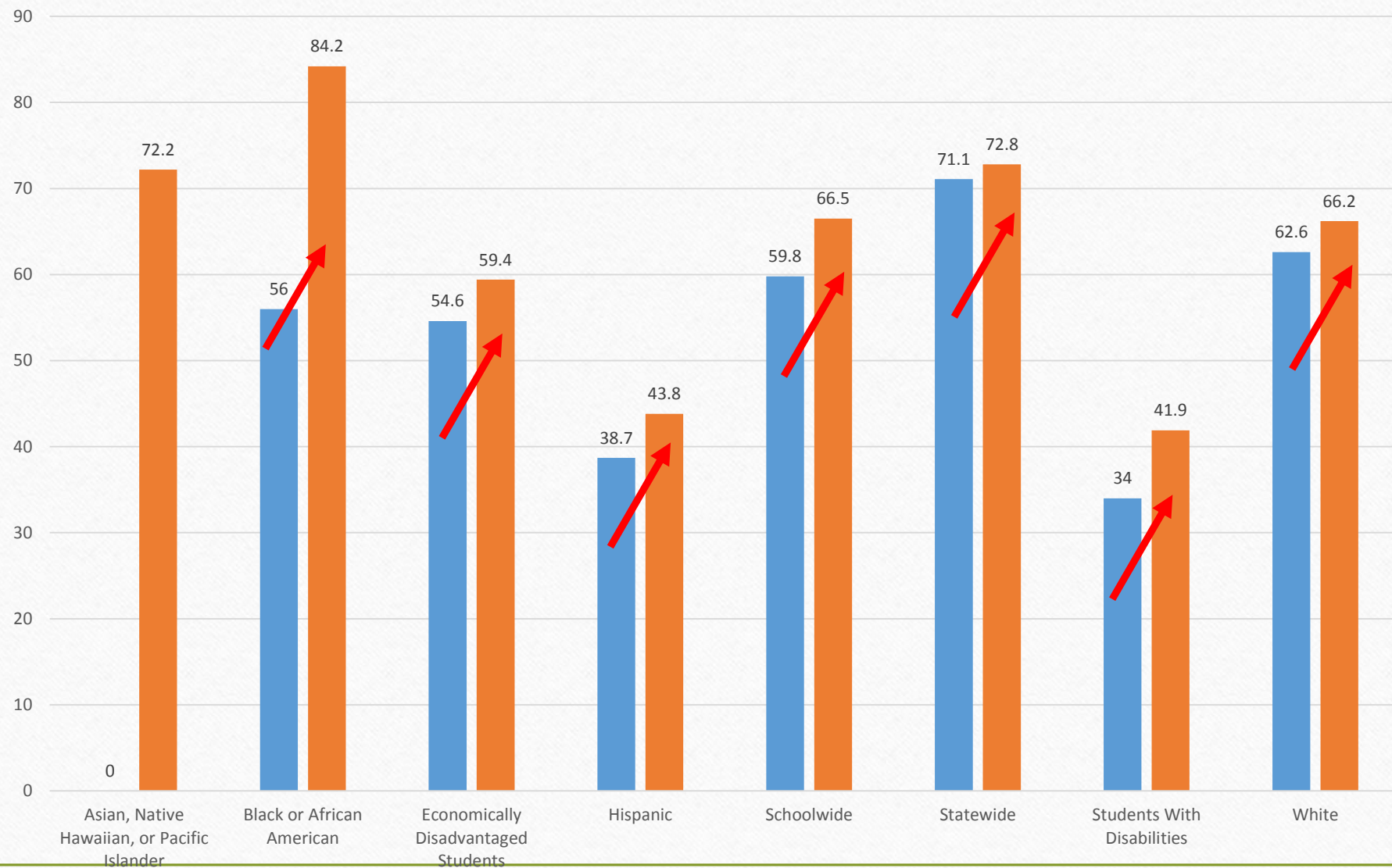


Chronic Absenteeism Percentages by Grade

BLUE = 2016-17 GREEN = 2017-18

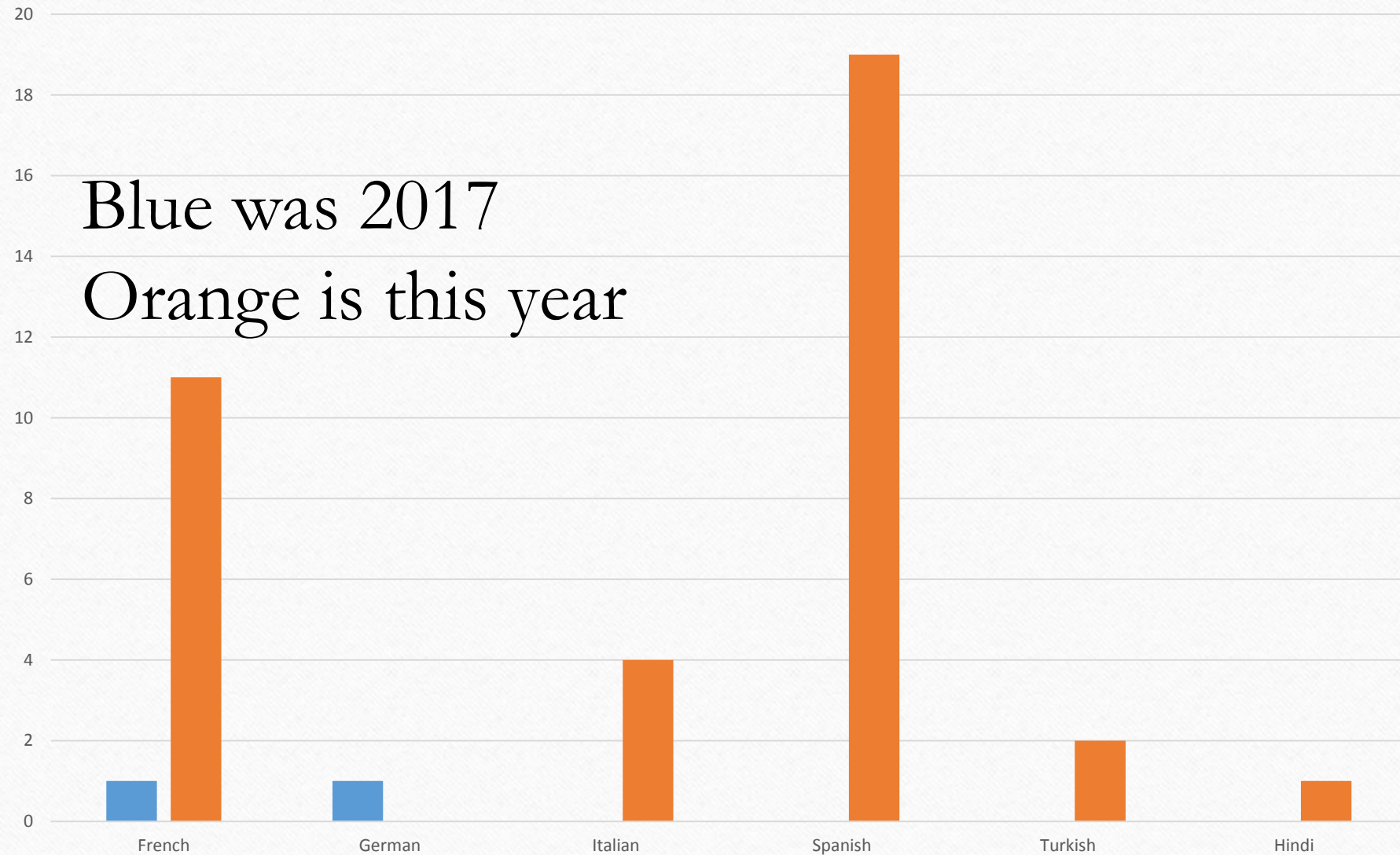


Post Secondary Plans



School Year	StudentGroup	Targeted_LowPerf	ELAProf_MetTarget	MathProf_MetTarget	Grad4YR_MetTarget	Grad5YR_MetTarget	ELP_MetTarget	CA_MetAverage
2016-2017	Asian, Native Hawaiian, or Pacific Islander	No	Met Target	Met Target	Met Target	Met Goal		Met Target
2017-2018	Asian, Native Hawaiian, or Pacific Islander	Yes	Met Target	Met Target	Not Met	Not Met		Met
2016-2017	Black or African American	No	Not Met	Met Target†	**	Met Goal		Met Target
2017-2018	Black or African American	No	Met Target†	Met Target†	Met Goal	**		Not Met
2016-2017	Economically Disadvantaged Students	No	Met Target	Met Target	Met Target	Met Target		Not Met
2017-2018	Economically Disadvantaged Students	No	Met Target	Met Target†	Met Target	Met Target		Not Met
2016-2017	English Learners	No	N	N	**	**	Met Target†	Met Target
2017-2018	English Learners	No	Not Met	Met Target	**	**	Met Target†	Not Met
2016-2017	Hispanic	No	Met Target	Met Target	Met Target	Not Met		Not Met
2017-2018	Hispanic	No	Met Target	Met Target	Met Target	Met Goal		Not Met
2016-2017	Schoolwide	No	Met Target	Met Target†	Met Target	Met Target		Met Target
2017-2018	Schoolwide	Yes	Met Target	Met Target†	Met Target	Met Target		Met
2016-2017	Students with Disabilities	No	Not Met	Not Met	Met Target	Met Target		Not Met
2017-2018	Students with Disabilities	No	Not Met	Not Met	Met Target	Met Target		Not Met
2016-2017	White	No	Met Target	Met Target†	Met Target	Met Target		Not Met
2017-2018	White	No	Met Target	Met Target†	Met Target	Met Target		Met

Seal of Biliteracy



Blue was 2017
Orange is this year

■ 2018 ■ 2019