

PSAT/NMSQT®

CollegeBoard / NATIONAL MERIT SCHOLARSHIP CORPORATION

PSAT/NMSQT®

Preliminary SAT/National Merit Scholarship Qualifying Test

Understanding Scores

2021-22



Contact Us

About College Board

College Board is a mission-driven not-for-profit organization that connects students to college success and opportunity. Founded in 1900, College Board was created to expand access to higher education. Today, College Board's membership is made up of over 6,000 of the world's leading educational institutions and is dedicated to promoting excellence and equity in education. Each year, College Board helps more than seven million students prepare for a successful transition to college through programs and services in college readiness and college success—including the SAT[®], the Advanced Placement[®] Program, and BigFuture[™]. The organization also serves the education community through research and advocacy on behalf of students, educators, and schools. For further information, visit collegeboard.org.

About National Merit Scholarship Corporation (NMSC)

NMSC[®] is an independent, not-for-profit organization that operates without government assistance. NMSC conducts the National Merit[®] Scholarship Program, an annual academic competition for recognition and college scholarships.

The Preliminary SAT/National Merit Scholarship Qualifying Test (PSAT/NMSQT[®]) is the route of entry to the National Merit Scholarship Program. Requirements for participation, steps in the competition, and awards offered are explained in the *PSAT/NMSQT Student Guide* and on NMSC's website. Further information is provided in the *Guide to the National Merit Scholarship Program*.

Questions about the scholarship program not answered in the published materials should be directed to:

National Merit Scholarship Corporation
1560 Sherman Avenue, Suite 200
Evanston, IL 60201-4897
847-866-5100

www.nationalmerit.org

About the PSAT/NMSQT

The PSAT/NMSQT is cosponsored by College Board and National Merit Scholarship Corporation. It is administered for College Board and National Merit Scholarship Corporation by Educational Testing Service (ETS).

CONTACTS FOR STUDENTS AND PARENTS

📧 psathelp@info.collegeboard.org

📞 866-433-7728
+1 212-713-8105 (International)
9 a.m.–6 p.m. ET, Mon.–Fri.

GENERAL CONTACTS

✉ PSAT/NMSQT
P.O. Box 6720
Princeton, NJ 08541-6720

CONTACTS FOR EDUCATORS

📧 psat/nmsqt@info.collegeboard.org

📞 888-477-PSAT (7728)
+1 212-237-1335 (International)
9 a.m.–6 p.m. ET, Mon.–Fri.

PSAT/NMSQT

Score Report Resources

Thank you for administering the 2021 PSAT/NMSQT at your school. Included is information about student score reports for you, your students, and their parents.

What's Included

This document delves deeper into the meaning of your students' scores, including what the assessment measures, how it is scored, and how you can use the data to monitor your students' progress.

The brochure also provides:

- An explanation of the NMSC Selection Index score and how National Merit Scholarship Corporation (NMSC) uses it to determine entry into the National Merit Scholarship Program.
- A sample score report walk-through so you can interpret your students' score reports.

Related Resources

Visit our **Data Tables and Technical Resources** page (research.collegeboard.org/programs/sat/data/data-tables-technical-resources) and select **Understanding Scores** then **PSAT/NMSQT Score Information** to find:

- Percentile tables for total and section scores.
- Answer keys and score conversion tables for the October 13 and 26, 2021, tests only.

For some test forms given in 2021, the actual questions, answers, and answer explanations will not be provided, and the score report will not include the correct answer column.

Visit our **Resource Library** (psat.org/resources) and under **Share with Students and Families** select **Scores** to find:

- Sample PSAT/NMSQT Score Report
- Student Score Report Tutorial flyers in English and Spanish

Hand the flyers out to inform parents and students about students' score reports.

The **PSAT/NMSQT** and the **SAT** Suite of Assessments

The SAT Suite of Assessments

The SAT Suite of Assessments is an integrated system of tests that includes the SAT (for students in grades 11 and 12), the PSAT/NMSQT and the PSAT™ 10 (for grades 10 and 11), and the PSAT™ 8/9 (for grades 8 and 9).

The tests measure the same skills and knowledge in grade-appropriate ways. They work together to show college readiness over time so educators, students, and parents can monitor student progress. Their content reflects the kind of meaningful, engaging, and challenging work that students find in the best middle school and high school courses taught today.

What the PSAT/NMSQT Measures

The PSAT/NMSQT measures the skills and knowledge that research shows are the most important for success in college and career. The Reading Test measures comprehension and reasoning skills and focuses on close reading of passages in a wide array of subject areas. The Writing and Language Test measures a range of skills, including command of evidence, expression of ideas, and the use of standard English conventions in grammar and punctuation. The Math Test covers a range of math practices, with an emphasis on problem solving, modeling, using tools strategically, and using algebraic structure.

How the PSAT/NMSQT Is Scored

Students receive a total score that is the sum of their scores on the two sections (the Evidence-Based Reading and Writing section and the Math section).

To calculate section scores, we first compute the student's raw score—the number of questions correctly answered—for each section. Nothing is deducted for incorrect answers or for unanswered questions.

Next, we convert the raw Reading Test score and the raw Writing and Language Test score to scaled test scores of 8–38. Then, we combine these to produce a scaled Evidence-Based Reading and Writing section score of 160–760. We also combine the raw Math Test scores and convert them to a scaled Math section score of 160–760. This conversion process adjusts for slight differences in difficulty among versions of the test and provides a score that is consistent across different versions. The scaled scores are the scores provided on score reports.

How You Can Use the Student Score Report

The student score report clearly summarizes a student's current achievement levels and encourages next steps to increase college and career readiness. You can help students by going over their score reports and helping them understand what their scores mean. Here's how:

TALK WITH STUDENTS ABOUT COLLEGE READINESS

For each section, the score report includes an indicator that shows whether the student's score meets the grade-level benchmark. These benchmarks allow students and educators to understand how students are progressing toward college readiness.

- If a student is meeting the benchmark for a section, remind them to continue to take rigorous courses and work hard to stay on track for college success.
- If a student is not meeting the benchmark for a section, connect them to classroom work that is focused on areas that need improvement. Khan Academy® can help supplement this work.

USE STUDENT SCORES TO IDENTIFY STRENGTHS AND WEAKNESSES

- Use test scores, cross-test scores, and subscores to evaluate a student's relative strengths and weaknesses and to determine which skills need practice.
- Use the red/yellow/green coding on section scores to evaluate how your student is performing relative to other students who are meeting or exceeding the benchmark.
 - ◆ Highlight the areas in green as the student's strengths.
 - ◆ Prioritize areas in the red range for additional work and practice.

HELP STUDENTS DECIDE ON NEXT STEPS

- Work with your students to think of ways to develop each of the skills you have identified for focus and improvement.
- Encourage students to link their College Board account to Khan Academy for a free, personalized study plan.

For further guidance on interpreting score reports, see the Professional Development modules for K–12 educators at sat.org/educators.

Score-Reporting Features

On pages 8–9 of this booklet, you'll find an annotated sample score report that includes detailed explanations of the information that students receive about their college readiness skills. Students can access their online reports to obtain more information and guidance, including free, personalized Khan Academy instruction and practice based on their results.

NOTE: *Score reports for schools that tested on Saturday, October 16, 2021, or participated in the test administration study won't include question-level details.*

The online reporting portal at k12reports.collegeboard.org offers you an array of powerful tools to assess your students' progress and plan instruction that delivers what they need. The tools include:

- Flexible reports that can be sorted and filtered by key demographics.
- Instructional planning support using test subscores in specific content areas, benchmarks, information for cross-subject tasks, and data for prescribing interventions when students are behind or ahead.
- Question Analysis Report that helps educators connect subscores to state standards, analyze students' strengths and weaknesses, learn which mistakes were the most common, and look for opportunities to reinforce skills. (The Question Analysis Report won't be available to schools that tested on Saturday, October 16, 2021, or participated in the test administration study.)
- Access to the AP Potential™ tool to pinpoint students who are likely to succeed in more challenging courses.
- Ability to print a paper copy of the student score report. Paper reports include total, sections, and test scores, as well as NMSC Selection Index, questions answered correctly/incorrectly, and question difficulty.

PSAT/NMSQT

Scores

Total Scores

The total score is the sum of the two section scores; its range is 320–1520.

Section Scores

Your students receive scores in the range of 160–760 for each of two sections. The Evidence-Based Reading and Writing section score combines the scores for the Reading Test and the Writing and Language Test. The Math section score is derived from the Math Test score, including the calculator and no-calculator portions.

Test Scores

The range for the following test scores is 8–38:

- Reading
- Writing and Language
- Math

Cross-Test Scores

The range for cross-test scores is also 8–38. These scores represent student performance on select questions across the three tests and show a student's strengths in the following domains:

- Analysis in History/Social Studies
- Analysis in Science

Subscores

Subscores in the range of 1–15 offer feedback on student performance in the following skill areas:

- Command of Evidence
- Words in Context
- Expression of Ideas
- Standard English Conventions
- Heart of Algebra
- Problem Solving and Data Analysis
- Passport to Advanced Math

Score Ranges

A student's ability is better represented by score ranges than points. Score ranges are derived from the standard error of measurement and show how much a student's scores would likely vary if they took a different administration of the test under identical conditions.

From recent administrations of the PSAT/NMSQT, these ranges are approximately:

- Total: ± 40 points
- Section: ± 30 points
- Test scores, subscores, and cross-test scores: ± 2 points

Selection Index

Reported on a scale ranging from 48 to 228, the Selection Index score is calculated by doubling the sum of the Reading, Writing and Language, and Math Test scores. See NMSC Selection Index on page 7 for more information.

Score Scales and Score Changes

Using PSAT/NMSQT Scores to Project SAT Scores

The SAT Suite—from the PSAT 8/9 through the SAT—uses a common score scale for the total, section, test, and cross-test scores. The ranges reported for each assessment reflect grade-level appropriateness within the common scale. Thus, while the total range for the SAT is 400–1600, the total range for the PSAT/NMSQT is 320–1520.

This common score scale means that a student who took the PSAT/NMSQT and received a Math section score of 500 would be expected to also get a 500 on the SAT or the PSAT 8/9 if they had taken either of those tests on that same day; a score of 500 represents the same level of academic achievement on all three assessments.

This also means that student growth across the SAT Suite is easy to determine. If a student takes the PSAT/NMSQT this year and receives a 500 Math section score, and then takes the SAT next year and earns a 550 Math section score, that student has shown a growth of 50 points, which likely resulted from hard work both in and out of school.

The total, section, test, and cross-test scores have been vertically scaled to allow the accurate measurement of growth from test to test. Encourage students to focus on the section scores if they are curious about the growth they can expect to see in their scores over the next year. They should look at the set of projected score ranges provided for students that reflect typical growth. Of course, a student's individual growth will be shaped by the courses taken and by the practice the student undertakes between assessments.

Subscores aren't on a vertical scale, and therefore comparing performance year over year should be based on relative performance rather than by calculating student growth across tests.

Students who wish to improve their performance on the SAT should follow these guidelines:

- Develop academic skills through challenging coursework.
- Read extensively and develop strong writing skills.
- Engage in deliberate practice in the three math areas that are emphasized the most in the assessments.
- Take practice tests and upload their results to Khan Academy for free, personalized practice of the skills they need to improve. To learn more, go to psat.org/practice.

Benchmarks and Red/Yellow/Green Performance

The PSAT/NMSQT Grade-Level Benchmarks

The SAT Suite offers grade-level benchmarks that can be used to gauge whether students are on track for becoming college ready each year in grades 8–12. Grade-level benchmarks represent the section scores on each assessment that students should meet or exceed to be considered on track to be college ready.

The PSAT/NMSQT reports separate benchmarks for 10th and 11th graders to help them understand their level of readiness for college and career training programs. The benchmarks help educators better understand how many students and also which students are on track to have the skills necessary for college entry level, credit-bearing courses. Equipped with this information, educators can support students who need extra help while there is still time for improvement. Teachers can also accelerate the progress of students who meet or exceed the benchmarks.

RECOMMENDED USES

Grade-level benchmarks can help educators:

- Identify students who are on track for success in college and career readiness.
- Identify students who may need extra support while there is still time for improvement.
- Find students who may be ready for more challenging coursework.

Grade-level benchmarks shouldn't be used to assign academic tracks, to discourage students from pursuing college, or to keep students from participating in challenging courses. Rather, the benchmarks are intended to help **all** students better prepare for life after high school.

What the Benchmarks Mean

The College and Career Readiness Benchmarks for the current SAT predict a 75% likelihood of achieving a C or higher in related first semester, credit-bearing college courses. The benchmarks are set at the section level, so there is a benchmark for Evidence-Based Reading and Writing and a benchmark for Math.

Score reports for the PSAT/NMSQT, PSAT 10, and PSAT 8/9 include grade-level benchmarks based on how students grow from year to year toward the SAT benchmarks.

PSAT/NMSQT Grade-Level Benchmarks		
	Evidence-Based Reading and Writing	Math
10th Grade PSAT/NMSQT	430	480
11th Grade PSAT/NMSQT	460	510

Additional Information Provided to Help You Understand Progress Toward College Readiness

The student score report provides further context for understanding scores by showing a color-coded bar chart for the section scores. Students who met or exceeded the benchmark will be in the green portion of the score band. If students didn't meet the benchmark but were close (within one year's growth), their scores will be in the yellow portion. Students who have a score indicating more than a year's growth below the grade-level benchmark will have a score in the red portion of the score band. Additionally, for each of the test scores and subscores, we have provided a color-coded guide to a student's relative strengths (green) and weaknesses (red).

NMSC Selection Index

The National Merit Scholarship Program is an annual academic competition among high school students for recognition and college scholarships. The program is conducted by National Merit Scholarship Corporation (NMSC), a not-for-profit organization that operates without government assistance.

The NMSC Selection Index

Reported on a scale ranging from 48 to 228, the Selection Index score is calculated by doubling the sum of the Reading, Writing and Language, and Math Test scores. For example, a Reading score of 23, a Writing and Language score of 20, and a Math score of 26.5 would result in a Selection Index score of 139, i.e., $[2(23+20+26.5)]$.

How NMSC Uses the Selection Index


NMSC uses the Selection Index score to designate groups of students to receive recognition in the National Merit Scholarship Program. Entry to NMSC's competition for scholarships to be offered in 2023 is determined by students' responses to program entry questions on the 2021 PSAT/NMSQT answer sheet. Both the printed PSAT/NMSQT student score report and the online report show the student's Selection Index, the student's responses to entry items, and whether the student meets participation requirements. Currently, about 1.5 million test takers meet requirements to enter NMSC's competition each year. Almost all entrants are in their third year (grade 11, junior year) of high school.


Of the 1.5 million NMSC program entrants, about 50,000 will earn 2021 PSAT/NMSQT scores high enough to qualify them for recognition. These students will be notified of their standing through their high schools in September 2022. Students who qualify to continue in the competition for scholarships to be offered in 2023 must then meet academic and other requirements specified by NMSC to be considered for awards.

A detailed description of the National Merit Scholarship Program is published in the *Guide to the National Merit Scholarship Program*, mailed to high school principals each fall. For students and parents, information about the competition is given in the *PSAT/NMSQT Student Guide* and at www.nationalmerit.org.

For inquiries about any aspect of the National Merit Scholarship Program—including entry requirements, the selection process, and awards to be offered—contact NMSC directly:

 www.nationalmerit.org

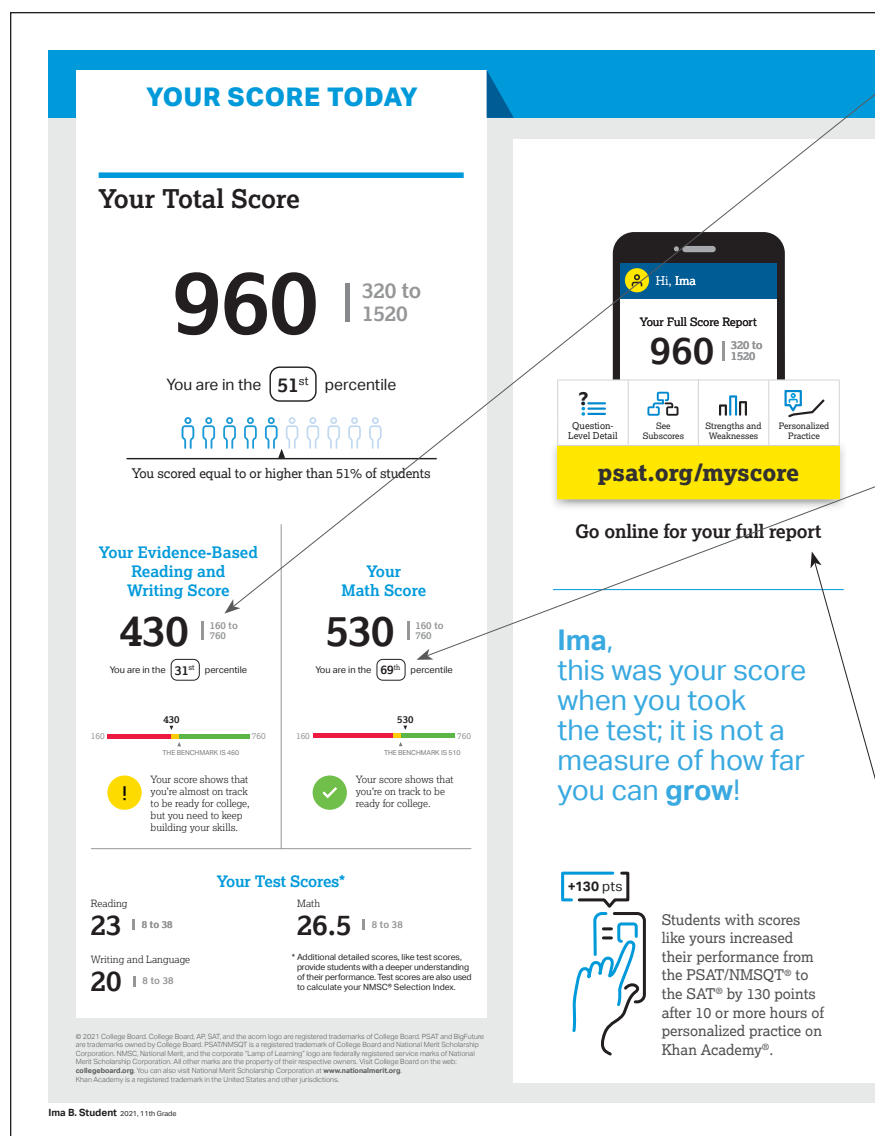
 847-866-5100

 National Merit Scholarship Corporation
1560 Sherman Avenue, Suite 200
Evanston, IL 60201-4897

The PSAT/NMSQT Score Report

A Case Study: Ima B. Student's PSAT/NMSQT Score Report

Take a look at Ima B. Student's sample score report below and on the next page. Use the corresponding information to help you interpret your student's PSAT/NMSQT Score Report.



What are Ima's scores?

Ima's Evidence-Based Reading and Writing score is 430, and her Math score is 530. In Evidence-Based Reading and Writing, Ima's score is approaching the benchmark, but she is not quite on track for college readiness. In Math, however, Ima is exceeding the benchmark and is on track. Test scores, cross-test scores, and subscores can give Ima a better understanding of areas to work on.

What are Ima's score percentiles?

Since Ima is in the 11th grade, the percentiles compare her scores with those of all 11th graders in the nation. Ima scored as well as or better in Evidence-Based Reading and Writing than 31% of a nationally representative group of juniors. In Math, she scored as well as or better than 69% of a nationally representative group of juniors. Additional percentiles are available in Ima's online score report.

How can Ima see her full report?

Ima can visit psat.org/myscore to see her full score report, learn how to prepare for the SAT, and see her potential for AP® coursework.

Score Report

YOUR PATH TOMORROW

Here's what else is waiting for you online:

- Course Recommendations**
Congrats! Your scores show you're ready to succeed in AP[®] courses. Talk to your counselor about signing up.
- Scholarship Opportunities**
Learn more about the National Merit[®] Scholarship Program. Also, earn College Board Opportunity Scholarships just by planning for college.
- Free Khan Academy[®] SAT Prep**
Create a personalized SAT study plan based on the questions you missed on the PSAT/NMSQT.

Don't forget!
Register to take the SAT ahead of college application deadlines in spring of junior year and fall of senior year.

NATIONAL MERIT SCHOLARSHIP CORPORATION

Your NMSC Selection Index
139

NMSC[®] uses a Selection Index score based on PSAT/NMSQT scores as an initial screen of students who enter its scholarship programs. The Selection Index score is double the sum of your Reading, Writing and Language, and Math Test scores.

Eligibility Information
You meet entry requirements for the 2023 National Merit Scholarship Program and your Selection Index score will be considered among 1.5 million program entrants.

If your Selection Index places you among the 50,000 high scorers who qualify for National Merit Scholarship Program recognition, you will be notified next September when qualifying Selection Index scores will be made available.

Entry Requirements
Information you provided on your answer sheet:
High school student: **YES**
Year to complete high school and enroll full time in college: **2023**
Total years to be spent in grades 9–12: **4**

National Merit Scholarship Corporation
National Merit Scholarship Corporation (NMSC) conducts the National Merit Scholarship Program, an academic competition for recognition and college scholarships.

To designate students who qualify for recognition in its 2023 competition, NMSC will consider the 2021 PSAT/NMSQT Selection Index scores of some 1.5 million test takers (usually high school juniors) who meet program entry requirements. For more information, please visit www.nationalmerit.org.

If any of your responses to NMSC's "Entry Requirements" questions are inaccurate or there has been a change in plans that may affect program entry, write immediately to:

National Merit Scholarship Corporation
Attn: Scholarship Administration
1560 Sherman Avenue, Suite 200
Evanston, IL 60201-4897

Include your name and home address along with your high school name, address, and six-digit code number.

Ima B. Student 2021, 11th Grade

Score Report

What are Ima's next steps?

When Ima accesses her full score report at psat.org/myscore, she'll also be able to see her potential for AP coursework, learn more about scholarship opportunities, and connect to free, personalized practice on Khan Academy.

Will Ima be able to enter the National Merit Scholarship Program?

Ima has an NMSC Selection Index score of 139, which is double the sum of her Reading Test (23), Writing and Language Test (20), and Math Test (26.5) scores. This Selection Index score is used by National Merit Scholarship Corporation to designate students to be recognized in its National Merit Scholarship Program.

If an asterisk had appeared next to Ima's score, it would mean she did not meet entry requirements for the program or her score was provided for guidance purposes only and would not be considered in the National Merit Scholarship Program. In the sample score report, Ima meets entry requirements and will be recognized if her score places her among the 50,000 high scorers. For entry requirements and information on the steps in the competition, see the 2021 *PSAT/NMSQT Student Guide* or visit www.nationalmerit.org.

When should Ima take the SAT?

As a junior, Ima should begin planning when she will take the SAT. Most students take the SAT for the first time in their junior year. By planning now, Ima can ensure she has adequate time to practice for the SAT. She can take advantage of practice resources by visiting psat.org/myscore.

How can Ima learn from her answers?

Using her score report with her PSAT/NMSQT test booklet, Ima can see the actual questions, correct answers, and difficulty level alongside her own answers. She can use her online score report to review the questions she answered incorrectly or omitted, and to see detailed answer explanations.

NOTE: For students at schools that tested on Saturday, October 16, 2021, or that participated in the test administration study, the actual questions, answers, and answer explanations won't be provided, and the score report won't include the correct answer column.

Your Question-Level Feedback

QUESTIONS OVERVIEW
The questions in your score report may not be in the same order as you saw on test day.

Section	Total Questions	Correct Answers	Incorrect Answers	Omitted Answers
READING	47	21	25	1
WRITING AND LANGUAGE	44	17	26	1
MATH - CALCULATOR	31	15	14	2
MATH - NO CALCULATOR	17	10	7	0

KEY
 ✓ Correct
 ⊖ Omitted
 U Unscorable
 X Multi-Grid/Incorrect
 ■ Easy Question
 ■ Medium Question
 ■ Hard Question
 ■ Easy Question Missed*

Section	Question #	Correct Answer	Your Answer	Difficulty	
READING	1	A	✓	■	
	2	B	✓	■	
	3	B	✓	■	
	4	B	✓	■	
	5	C	✓	■	
	6	D	✓	■	
	7	B	✓	■	
	8	A	✓	■	
	9	D	✓	■	
	10	A	✓	■	
	11	D	✓	■	
	12	D	✓	■	
	13	D	✓	■	
	14	A	✓	■	
	15	C	✓	■	
	16	B	✓	■	
	17	D	✓	■	
18	B	✓	■		
19	A	✓	■		
20	C	✓	■		
21	B	✓	■		
22	D	✓	■		
23	B	✓	■		
24	D	✓	■		
25	C	✓	■		
26	B	✓	■		
27	B	✓	■		
28	A	✓	■		
29	D	✓	■		
30	B	✓	■		
31	D	✓	■		
32	A	✓	■		
33	C	✓	■		
34	A	✓	■		
35	A	✓	■		
36	C	✓	■		
37	B	✓	■		
38	C	✓	■		
39	C	✓	■		
40	C	✓	■		
41	B	✓	■		
42	B	✓	■		
43	A	✓	■		
44	A	✓	■		
45	A	✓	■		
46	D	✓	■		
47	C	✓	■		
WRITING AND LANGUAGE	1	D	✓	■	
	2	C	✓	■	
	3	C	✓	■	
	4	C	✓	■	
	5	B	✓	■	
	6	B	✓	■	
	7	A	✓	■	
	8	B	✓	■	
	9	A	✓	■	
	10	D	✓	■	
	11	D	✓	■	
	12	B	✓	■	
	13	C	✓	■	
	14	C	✓	■	
	15	D	✓	■	
	16	B	✓	■	
	17	B	✓	■	
18	A	✓	■		
19	B	✓	■		
20	C	✓	■		
21	A	✓	■		
22	A	✓	■		
23	C	✓	■		
24	D	✓	■		
25	C	✓	■		
26	A	✓	■		
27	A	✓	■		
28	B	✓	■		
29	D	✓	■		
30	C	✓	■		
31	D	✓	■		
32	B	✓	■		
33	D	✓	■		
34	D	✓	■		
35	D	✓	■		
36	B	✓	■		
37	C	✓	■		
38	A	✓	■		
39	C	✓	■		
40	D	✓	■		
41	D	✓	■		
42	A	✓	■		
43	C	✓	■		
44	B	✓	■		
45	C	✓	■		
46	A	✓	■		
47	C	✓	■		
MATH - CALCULATOR	1	B	✓	■	
	2	A	✓	■	
	3	B	✓	■	
	4	D	✓	■	
	5	B	✓	■	
	6	A	✓	■	
	7	B	✓	■	
	8	C	✓	■	
	9	A	✓	■	
	10	D	✓	■	
	11	D	✓	■	
	12	A	✓	■	
	13	B	✓	■	
	14	C	✓	■	
	15	C	✓	■	
	16	B	✓	■	
	17	D	✓	■	
18	B	✓	■		
19	C	✓	■		
20	B	✓	■		
21	B	✓	■		
22	D	✓	■		
23	D	✓	■		
24	C	✓	■		
25	B	✓	■		
26	D	✓	■		
27	D	✓	■		
28	65	65	80	■	
29	0	12	0	■	
30	1368	0	0	■	
31	85	0	75	■	
MATH - NO CALCULATOR	1	D	✓	■	
	2	A	✓	■	
	3	B	✓	■	
	4	C	✓	■	
	5	C	✓	■	
	6	B	✓	■	
	7	A	✓	■	
	8	B	✓	■	
	9	C	✓	■	
	10	D	✓	■	
	11	A	✓	■	
	12	C	✓	■	
	13	B	✓	■	
	14	2	0	0	■
	15	90	80	0	■
	16	1	0	0	■
	17	0	0	0	■

psat.org/myscore

Go online for your full report

Strengths and Weaknesses | Personalized Practice

Ima B. Student 2021, 11th Grade

Score Report

The PSAT/NMSQT Sample Score Report

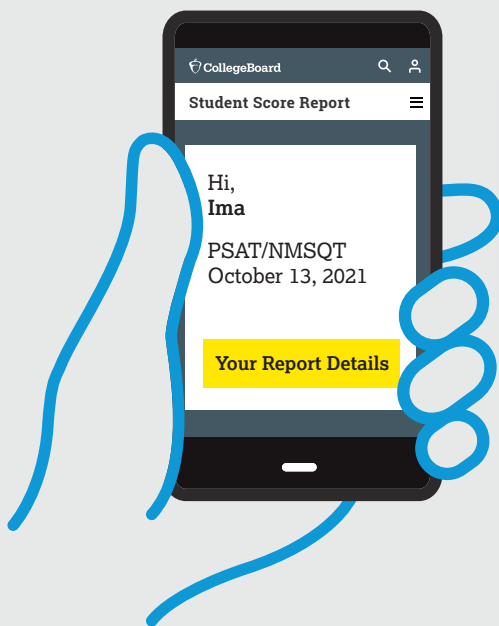
PSAT/NMSQT[®]

Preliminary SAT/National Merit Scholarship Qualifying Test

PSAT/NMSQT[®]

CollegeBoard / NATIONAL MERIT SCHOLARSHIP CORPORATION

Your Summary Score Report



Get Your Full
Score Report Online

psat.org/myscore

Hi, Ima B. Student

School Name: **John F. Kennedy High School**

School Code: **123456**

Grade: **11th Grade**

Student ID: **24068907**

Access Code: **A02670146P**

College Board ID: **12345678**

The PSAT/NMSQT Sample Score Report (continued)

YOUR SCORE TODAY

Your Total Score

960 | 320 to 1520

You are in the **51st** percentile

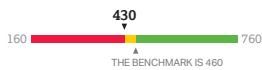


You scored equal to or higher than 51% of students

Your Evidence-Based Reading and Writing Score

430 | 160 to 760

You are in the **31st** percentile

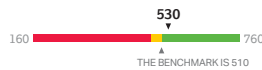


! Your score shows that you're almost on track to be ready for college, but you need to keep building your skills.

Your Math Score

530 | 160 to 760

You are in the **69th** percentile



✓ Your score shows that you're on track to be ready for college.

Your Test Scores*

Reading
23 | 8 to 38

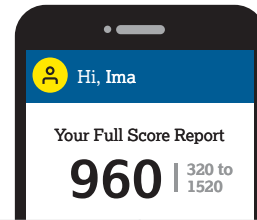
Writing and Language
20 | 8 to 38

Math
26.5 | 8 to 38

* Additional detailed scores, like test scores, provide students with a deeper understanding of their performance. Test scores are also used to calculate your NMSC® Selection Index.

© 2021 College Board. College Board, AP, SAT, and the acorn logo are registered trademarks of College Board. PSAT and BigFuture are trademarks owned by College Board. PSAT/NMSQT is a registered trademark of College Board and National Merit Scholarship Corporation. NMSC, National Merit, and the corporate "Lamp of Learning" logo are federally registered service marks of National Merit Scholarship Corporation. All other marks are the property of their respective owners. Visit College Board on the web: collegeboard.org. You can also visit National Merit Scholarship Corporation at www.nationalmerit.org. Khan Academy is a registered trademark in the United States and other jurisdictions.

Ima B. Student 2021, 11th Grade



Question-Level Detail	See Subscores	Strengths and Weaknesses	Personalized Practice
-----------------------	---------------	--------------------------	-----------------------

psat.org/myscore

Go online for your full report

Ima, this was your score when you took the test; it is not a measure of how far you can **grow!**



Students with scores like yours increased their performance from the PSAT/NMSQT® to the SAT® by 130 points after 10 or more hours of personalized practice on Khan Academy®.

The PSAT/NMSQT Sample Score Report (continued)

YOUR PATH TOMORROW

Here's what else is waiting for you online:

1

Course Recommendations

Congrats! Your scores show you're ready to succeed in AP® courses. Talk to your counselor about signing up.

2

Scholarship Opportunities

Learn more about the National Merit® Scholarship Program. Also, earn College Board Opportunity Scholarships just by planning for college.

3

Free Khan Academy® SAT Prep

Create a personalized SAT study plan based on the questions you missed on the PSAT/NMSQT.

SAT®

Don't forget!

Register to take the SAT ahead of college application deadlines in spring of junior year and fall of senior year.



Your NMSC Selection Index

139

NMSC® uses a Selection Index score based on PSAT/NMSQT scores as an initial screen of students who enter its scholarship programs. The Selection Index score is double the sum of your Reading, Writing and Language, and Math Test scores.

Eligibility Information

You meet entry requirements for the 2023 National Merit Scholarship Program and your Selection Index score will be considered among 1.5 million program entrants.

If your Selection Index places you among the 50,000 high scorers who qualify for National Merit Scholarship Program recognition, you will be notified next September when qualifying Selection Index scores will be made available.

Entry Requirements

Information you provided on your answer sheet:

High school student: **YES**

Year to complete high school and enroll full time in college: **2023**

Total years to be spent in grades 9–12: **4**

National Merit Scholarship Corporation

National Merit Scholarship Corporation (NMSC) conducts the National Merit Scholarship Program, an academic competition for recognition and college scholarships.

To designate students who qualify for recognition in its 2023 competition, NMSC will consider the 2021 PSAT/NMSQT Selection Index scores of some 1.5 million test takers (usually high school juniors) who meet program entry requirements. For more information, please visit: www.nationalmerit.org.

If any of your responses to NMSC's "Entry Requirements" questions are inaccurate or there has been a change in plans that may affect program entry, write immediately to:

National Merit Scholarship Corporation
Attn: Scholarship Administration
1560 Sherman Avenue, Suite 200
Evanston, IL 60201-4897

Include your name and home address along with your high school name, address, and six-digit code number.

The PSAT/NMSQT Sample Score Report (continued)*

Your Question-Level Feedback

QUESTIONS OVERVIEW

The questions in your score report may not be in the same order as you saw on test day.

READING

47
Total Questions

21
Correct Answers

WRITING AND LANGUAGE

44
Total Questions

17
Correct Answers

MATH – CALCULATOR

31
Total Questions

15
Correct Answers

MATH – NO CALCULATOR

17
Total Questions

10
Correct Answers

7
Incorrect Answers

KEY

- ✓ Correct
- Omitted
- U Unscorable
- X Multi-Grid/Incorrect
- Easy Question
- Medium Question
- Hard Question
- Easy Question Missed*

READING

Question #	Correct	Your Answer	Difficulty
1	A	✓	■
2	B	A	■
3	B	✓	■
4	B	A	■
5	C	✓	■
6	D	✓	■
7	B	✓	■
8	A	✓	■
9	D	✓	■
10	A	✓	■
11	D	C	■
12	D	B	■
13	D	A	■
14	A	X	■
15	C	B	■
16	B	C	■
17	D	C	■
18	B	D	■
19	A	✓	■
20	C	✓	■
21	B	D	■
22	D	✓	■
23	B	D	■
24	D	✓	■
25	C	✓	■
26	B	A	■
27	B	C	■
28	A	C	■
29	D	A	■
30	B	A	■
31	D	✓	■
32	A	✓	■
33	C	✓	■
34	A	B	■
35	A	B	■
36	C	○	■
37	B	C	■
38	C	D	■
39	C	✓	■
40	C	✓	■
41	B	✓	■
42	B	✓	■
43	A	B	■
44	A	✓	■
45	A	C	■
46	D	A	■
47	C	B	■

WRITING AND LANGUAGE

Question #	Correct	Your Answer	Difficulty
1	D	C	■
2	B	✓	■
3	C	D	■
4	C	A	■
5	B	D	■
6	B	X	■
7	A	D	■
8	B	C	■
9	A	B	■
10	D	✓	■
11	D	✓	■
12	B	✓	■
13	C	✓	■
14	C	B	■
15	D	✓	■
16	B	A	■
17	B	D	■
18	A	✓	■
19	B	✓	■
20	C	D	■
21	A	✓	■
22	A	B	■
23	C	B	■
24	D	C	■
25	C	D	■
26	A	✓	■
27	A	D	■
28	B	✓	■
29	D	A	■
30	C	B	■
31	D	✓	■
32	B	✓	■
33	D	✓	■
34	D	B	■
35	D	✓	■
36	B	A	■
37	C	D	■
38	A	✓	■
39	C	✓	■
40	D	A	■
41	D	B	■
42	A	○	■
43	C	B	■
44	B	C	■

MATH – CALCULATOR

Question #	Correct	Your Answer	Difficulty
1	B	✓	■
2	A	✓	■
3	B	✓	■
4	D	✓	■
5	B	C	■
6	A	✓	■
7	B	✓	■
8	C	B	■
9	A	✓	■
10	D	C	■
11	D	✓	■
12	A	✓	■
13	B	✓	■
14	C	✓	■
Question #	Correct	Your Answer	Difficulty
28	65	60	■
29	0, 12	2	■
30	1368	○	■
31	85	75	■

MATH – CALCULATOR

Question #	Correct	Your Answer	Difficulty
15	C	A	■
16	B	✓	■
17	D	✓	■
18	B	A	■
19	C	A	■
20	B	✓	■
21	B	C	■
22	D	C	■
23	D	B	■
24	C	○	■
25	B	✓	■
26	D	✓	■
27	D	A	■

MATH – NO CALCULATOR

Question #	Correct	Your Answer	Difficulty
1	D	✓	■
2	A	✓	■
3	B	✓	■
4	C	B	■
5	C	✓	■
6	B	✓	■
7	A	✓	■
Question #	Correct	Your Answer	Difficulty
14	2	0	■
15	90	80	■
16	1	2	■
17	0	✓	■

Hi, Ima

Your Full Score Report

960 | 320 to 1520

psat.org/myscore

Go online for your full report

Question-Level Detail

See Subscores

Strengths and Weaknesses

Personalized Practice

*For schools that tested on Saturday, October 16, 2021, or that participated in the test administration study, students will see if they answered questions correctly. Actual questions, answers, and answer explanations will not be provided.

Understanding 2021 PSAT/NMSQT Results

PSAT/NMSQT®

CollegeBoard

NATIONAL MERIT SCHOLARSHIP CORPORATION

TUTORIAL

Understanding 2021-22 PSAT/NMSQT Results

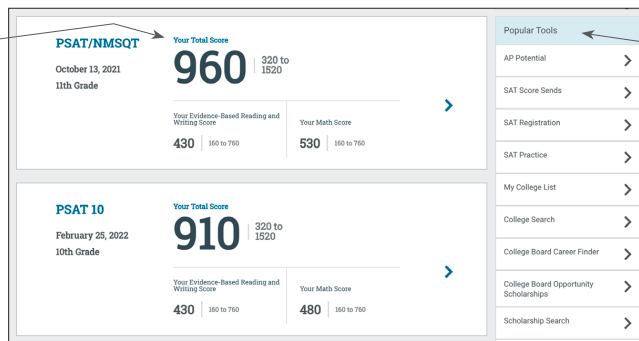
Access the student score report and discover next steps.

Viewing the Score Report

Students should log in to their College Board account or create a new one at studentscores.collegeboard.org. A dashboard will show their most recent scores.

Total Score

Selecting the arrow next to the score leads to their detailed score report.



Dashboard

Next Steps

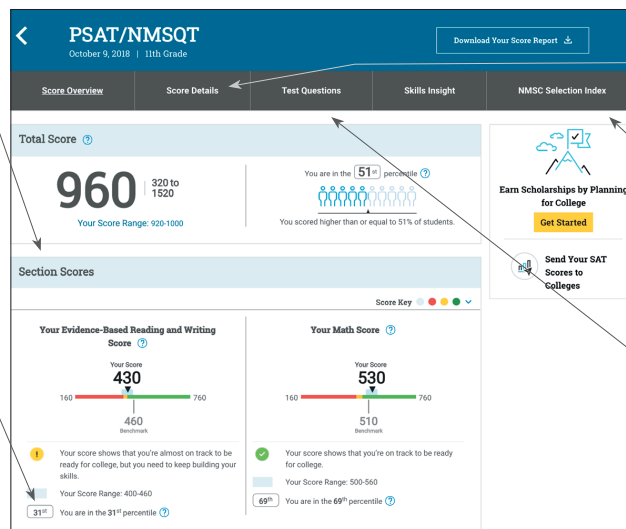
The dashboard includes links to Popular Tools like Student Search, AP Potential™, and SAT® Registration.

Section Scores

This student's Evidence-Based Reading and Writing score is 430, and their Math score is 530. In Evidence-Based Reading and Writing, the student's score is approaching the benchmark, but they are not quite on track for college readiness. In Math, however, they are exceeding the benchmark and are on track.

Percentiles

This student scored as well as or better in Evidence-Based Reading and Writing than 31% of a nationally representative group of juniors. In Math, they scored as well as or better than 69% of a nationally representative group of juniors.



Score Overview

Score Details

Selecting Score Details takes the student to more information about test scores and subscores.

NMSC Selection Index

Selecting NMSC Selection Index takes the student to more information about their participation in the National Merit® Scholarship Program.

Test Questions

For PSAT/NMSQT® Primary and Alternate administrations, students can see the question content and answer explanation with their scores.

Understanding 2021 PSAT/NMSQT Results (continued)

NATIONAL MERIT SCHOLARSHIP CORPORATION

Your NMSC Selection Index Score

139*

$2(23 + 20 + 26.5) = 139^*$

Reading Test: 23, Writing and Language Test: 20, Math Test: 26.5, NMSC Selection Index Score: 139*

NMSC uses a Selection Index score based on PSAT/NMSQT scores as an initial screen of students who enter its scholarship programs. The Selection Index score is double the sum of your Reading, Writing and Language, and Math Test scores, as shown above. To view the details of your test scores, [click here](#).

Eligibility Information
The asterisk () next to your Selection Index score means you **do not** meet entry requirements for the 2020 National Merit Scholarship Program. See your responses in the "Entry Requirements" section on this page.

NMSC Selection Index Score

NMSC Selection Index Score

This student has an NMSC Selection Index score of 139, which is double the sum of their Reading Test (23), Writing and Language Test (20), and Math Test (26.5) scores. This Selection Index score is used by National Merit Scholarship Corporation to designate students to be recognized in its National Merit Scholarship Program. For more information, visit www.nationalmerit.org.

Eligibility Information

Each student will receive a personalized message indicating whether the Selection Index will be considered in the National Merit Scholarship Program. For more information, visit www.nationalmerit.org.

Test Scores

Test scores range from 8 to 38. This student scored a 23 and is in the yellow on the Reading Test, indicating they are below the average student performance of those who met the benchmark by one year or less.

Score Details Expand All | Collapse All

Test Scores

Scores for the three tests you took: Reading, Writing and Language, and Math.

Score Key: [Blue] [Red] [Yellow] [Green] [Down Arrow]

Reading ?

Your Score: **23**

8 ————— 38

Your Score Range: 21-25

18th You are in the 18th percentile ?

Your Test Questions: 47
Total Questions

10 Correct ✓, 35 Incorrect ✗, 2 Omitted ⊘

Test Scores

Next Steps for Students and Parents:

View a video walkthrough of the score report: [youtube.com/watch?v=ie6WBDzjtGA](https://www.youtube.com/watch?v=ie6WBDzjtGA)

Learn more about understanding and using scores: psat.org/scores

Connect to scholarships: collegereadiness.collegeboard.org/psat-nmsqt-psat-10/scholarships-and-recognition

Connect to colleges with Student Search Service®: studentsearch.collegeboard.org

Practice for the SAT: satpractice.org

Next Steps for Educators:

Learn about sharing scores with your students: collegereadiness.collegeboard.org/psat-nmsqt-psat-10/k12-educators/sharing-results

© 2021 College Board. College Board, AP, SAT, and the acorn logo are registered trademarks of College Board. AP Potential and PSAT are trademarks owned by College Board. PSAT/NMSQT is a registered trademark of College Board and National Merit Scholarship Corporation. NMSC, National Merit, and the corporate "Lamp of Learning" logo are federally registered service marks of National Merit Scholarship Corporation. All other marks are the property of their respective owners. Visit College Board on the web: collegeboard.org. You can also visit National Merit Scholarship Corporation at www.nationalmerit.org.